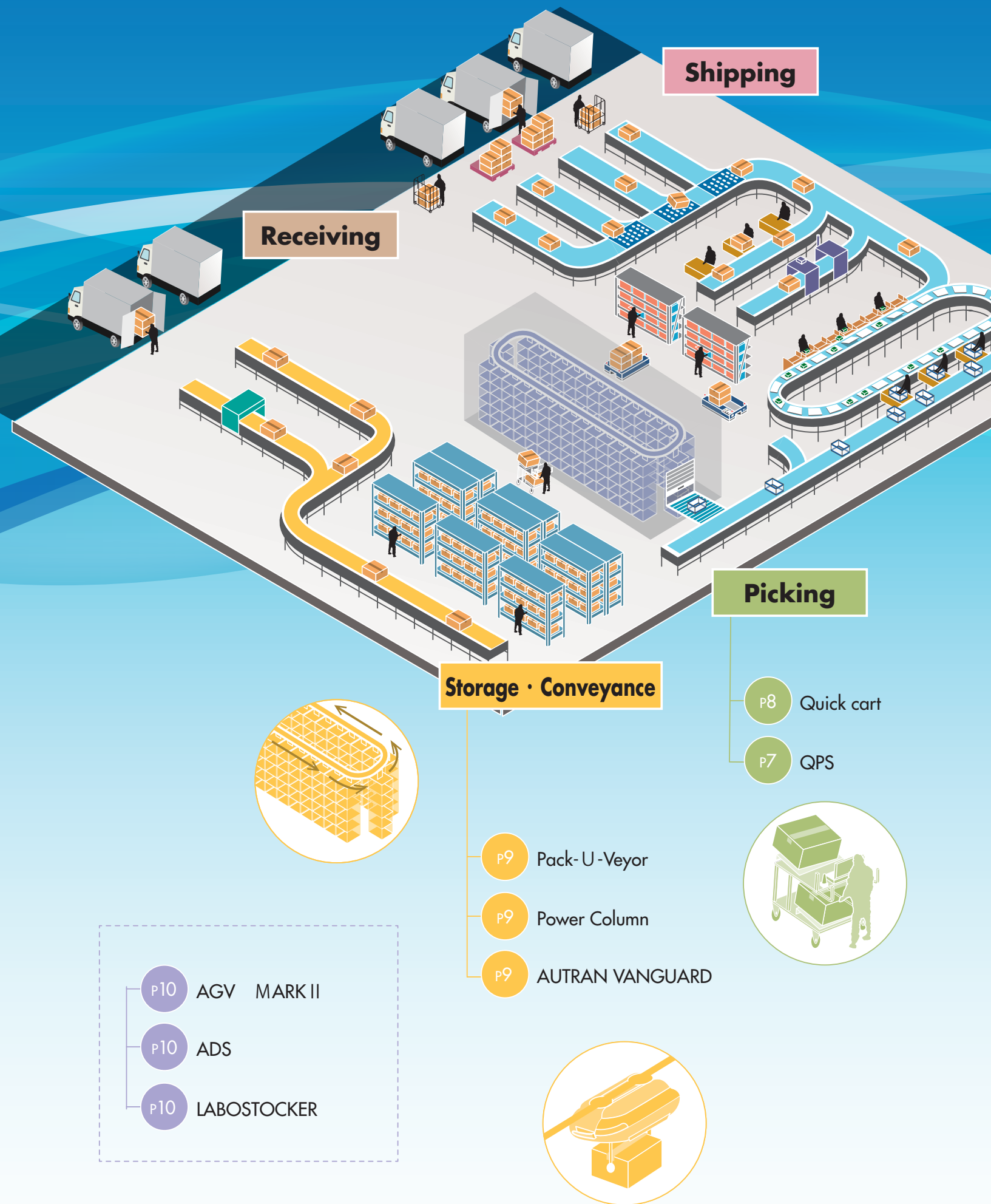
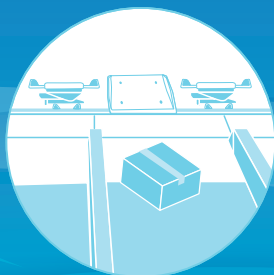


TSUBAKI Distribution Systems







Sorting

〈Piece sorting〉

P3 LINISORT L/R/S

P4 LINISORT VS/VSH

P5 LINISORT S-C

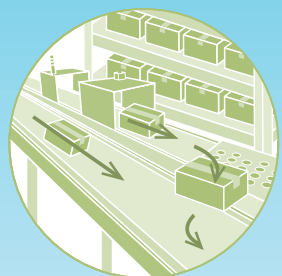
P8 WAS

P8 Shutter assort system

P7 SAS-PAK

〈Case sorting〉

P6 QUICKSORT



Ecology

Economy

Tsubaki LINISORT™ L/R/S

Linisort is a series of automatic sorting machines featuring tilt trays in a horizontal loop format, powered by a linear motor drive system which provides fast, quiet operation and high reliability.

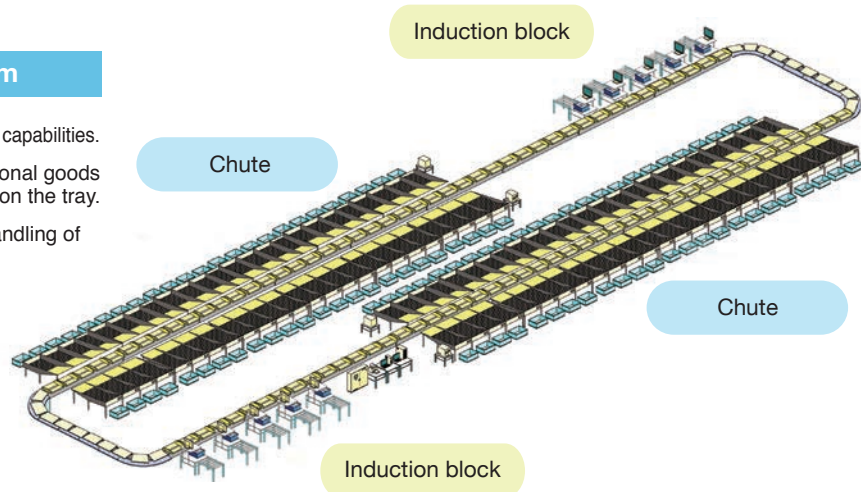
Features

- Clean, quiet environment courtesy of a linear drive motor system
- High reliability courtesy of a multi-drive system
- Extremely accurate high performance sorting

■ Circling type LINISORT S system

The multiple-feeder layout provides high processing capabilities.

- When a chute has a full load of goods, additional goods are sent past the chute and temporarily held on the tray.
- Easy issuance of SCM labels and smooth handling of detailed case data.



LINISORT™ L



LINISORT™ R



LINISORT™ S

Specifications

		L	R	S
Sorting capacity	MAX	10,000 pcs/hour max.		
Sorting articles	MAX	Length (mm)	1200	650
		Width (mm)	800	450
		Height (mm)	800	300
	MIN	Weight (kg)	50	5
		Length (mm)	200	50
		Width (mm)	100	50
Feeding method		Height (mm)	15	2
		Weight (kg)	0.2	0.1
Drive		Linear motor		
Power supply		AC200/220V 50/60Hz		

This system is ideal for:

LINISORT L...Transport terminals, Distribution centers

LINISORT R...Transport terminals, Newspaper printing factories, Distribution centers

LINISORT S...Distribution centers, most commonly for sorting articles

Tsubaki LINISORT™ VS/VSH

LINISORT V series systems use a vertical loop that derives maximum benefit from Linisort technology while allowing it to be installed in smaller spaces.

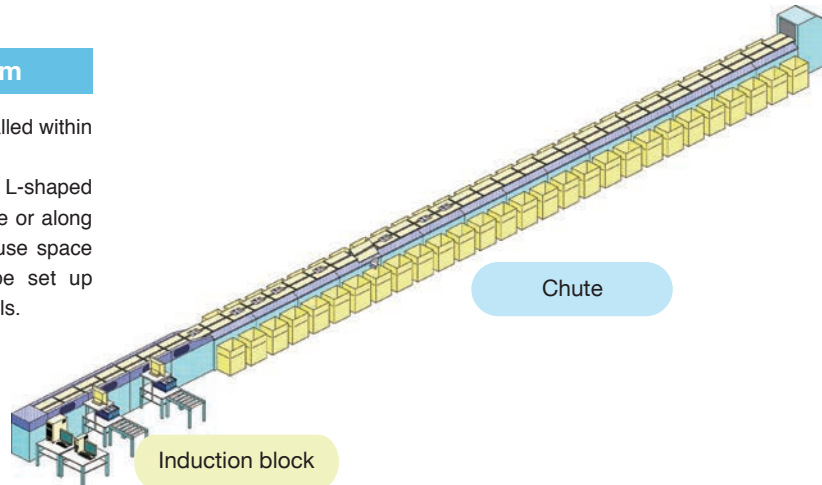
Features

- Clean, quiet environment courtesy of a linear drive motor system
- High reliability courtesy of a multi-drive system
- Extremely accurate high performance sorting
- Space-saving

■ Linear type LINISORT V System

The slim layout allows the system to be installed within confined spaces.

For example, the system can be placed in a L-shaped arrangement in one corner of the warehouse or along the wall, making it possible to use warehouse space more effectively. The system can also be set up vertically to accommodate different floor levels.



LINISORT™ VS



LINISORT™ VSH

Specifications

			VS	VSH
Sorting capacity	MAX		7,200 pcs/hour max.	6,000 pcs/hour max.
Sorting articles	MAX	Length (mm)	450	
		Width (mm)	350	
		Height (mm)	200	
		Weight (kg)	5	
	MIN	Length (mm)	50	
		Width (mm)	50	
		Height (mm)	2	
		Weight (kg)	0.1	
Feeding method			Manual or automatic (conveyor)	
Drive			Linear motor	
Power supply			AC200/220V 50/60Hz	

* Please contact us for details about specifications that are not listed above.

This system is ideal for:

LINISORT VS...Distribution centers, most commonly for sorting articles

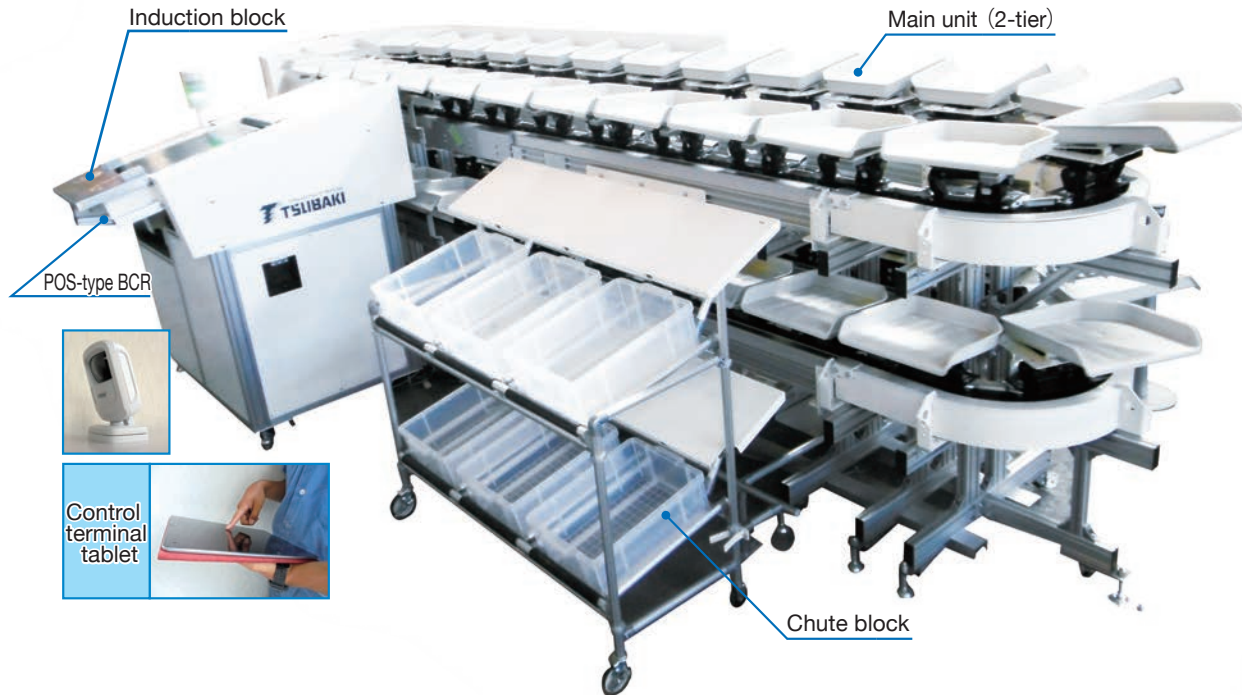
LINISORT VSH...Distribution centers, most commonly for sorting articles

Tsubaki LINISORT™ S-C

Tsubaki LINISORT S-C is a high performance compact multi-tray sorter that can be relocated easily and installed in a small space.

Features

- Space-saving
- Easy installation
- High performance/Low noise



specifications

Item	R300 type	R500 type
Machine ability	One-tier configuration : 3,000 pieces/h Two-tier configuration : 6,000 pieces/h	1-tier configuration : 2,400 pieces/h 2-tier configuration : 4,800 pieces/h
Tray pitch (mm)	400	500
Target work size (mm)	MAX. L 350 × W 250 × H 50 MIN. L 100 × W 100 × H 10	MAX. L 450 × W 350 × H 150 MIN. L 100 × W 100 × H 10
Target work weight (kg)	0.1 to 2	
Feeding method	Automatic (conveyor) / Manual feeding	
Number of inductions	MAX. 4 inductions * 2-tier configuration: 1 induction = Upper induction + Lower induction	
Number of chutes	MAX. 90 chutes/tier (2-stage configuration: 180 chutes)	

(Reference) R500 type, 4 inductions, 30 chutes: 4.6 m x 11.8 m

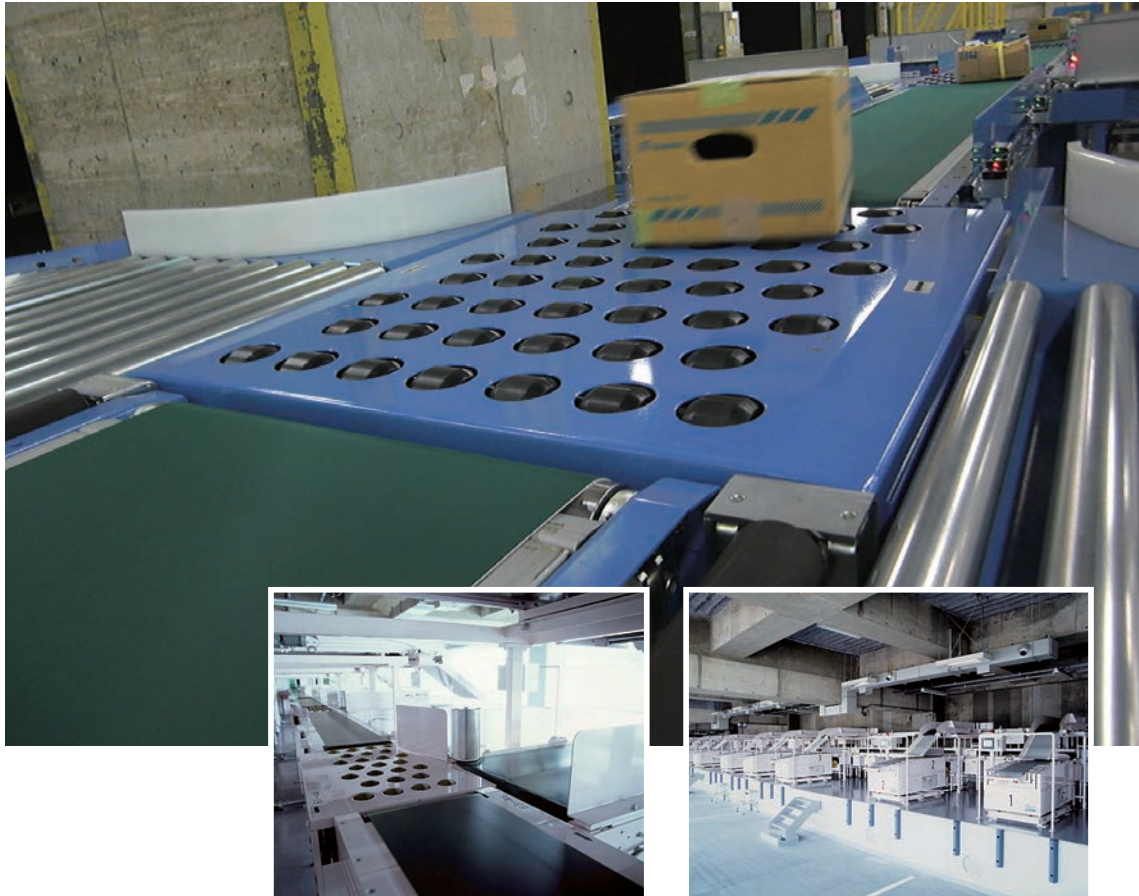
Tsubaki QUICKSORT™ E



Tsubaki QUICKSORT is a conveyor-based sorting system that rapidly and accurately sorts packaged newspapers, newspaper inserts, cardboard boxes, and other objects.

Features

- Ball-shaped rollers ensure quiet, stable sorting
- Simple structure allows for easy maintenance
- Safe design with hidden moving block



Specifications

Sorting performance	MAX. 7,200 pcs/hour
	MAX. L 1,000 x W 600 x H 600 (mm) Weight : 50 kg
Applicable products	MIN. L 250 x W 200 x H 15 (mm) Weight : 0.1 kg
	Packaged newspapers, Newspaper inserts, Cardboard cases
Feeding method	Items are automatically fed to the conveyor
Drive method	Induction motor

* Please contact us for details about specifications that are not listed above.

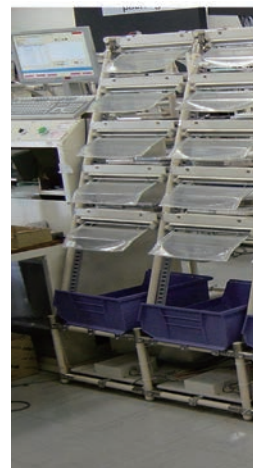
This system is ideal for:

Newspaper ad-sorting center, Newspaper printing factory, Transport terminal

n that is equipped with an item-picking flow rack and a
 features a number of error-prevention mechanisms, enabling
 efficiently while utilizing the abilities of each worker.

Features

- The multi-tier rotary rack used for sorting provides multiple stations, eliminating the time wasted by walking.
- The shutter and display unit installed at the operating station prevent sorting errors
- The continuous rotation of the rotary rack station eliminates the time the worker spends waiting.
- Processed products are automatically shipped when the Full button is pressed or when orders have been completed.
- Shipments can be sorted by delivery site, by customer, or by other options.



Features

and stop within reach of the worker. The only movement
 g items to cases sent from the flow racks.

d that achieves a higher level of work precision than conventional
 or prevention cover helps to eliminate unwanted feeding.

flows for the smooth issuance of picking instructions,
 efficient delivery of instructions for replenishing goods.

ill and expertise can perform sorting tasks with the same



Specifications

Transfer items (conveyor line)	MAX. L 1,000 x W 600 x H 600 (mm) Weight : 50 kg
	MIN. L 250 x W 200 x H 100 (mm) Weight : 0.1 kg
	Plastic containers (foldable containers) or Cardboard boxes
Weight	MAX. 50kg MIN. 0.1kg
Bar code	ITF, JAN, CODE128 *Supports RFID

ki Shutter Assort System



Features

- Since the worker feeds goods onto a shelf with an open shutter, unwanted feedings can be eliminated. (Pneumatic open type shutter)
- Sorting quantities are announced to the worker by voice.
- Since it is a simple task, anyone can perform reliable and speedy operation immediately.

ki WAS



Features

- The “allocation rack” comes with a display unit and a weight scale at each station, thereby eliminating the need for inspections and preventing feed errors.
- Preventing feed errors and the eliminating the need for inspections make it possible to fully utilize the abilities of each worker and enhance work efficiency.
- The rack fitted with casters makes it easy to relocate the system and devise flexible plans for equipment layout.

ki Quick Cart



Features

- The bar code reader and the weight scale installed

Tsubaki Pack-U-Veyor



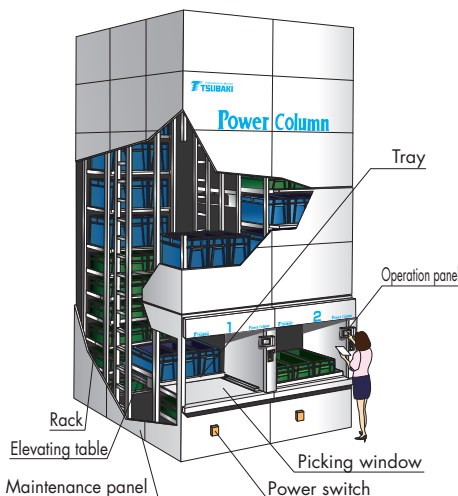
Multi type (for automatic transfer)

Tsubaki Pack-U-Veyors fitted with Horizontal Carousel Systems are widely used to store various kinds of articles, including small parts for electronic/precision machines, refrigerated/frozen foods, and important documents requiring high security. In total, over 3,000 units have already been sold. The machines have a variety of configurations, including Single type for manual picking, and Multi type which acts as a fast storage and retrieval unit to provide a good information system for inventory control and operation management.

Features

- High density storage and space savings
- Possibility of adding features such as refrigerated/frozen storage or enforced security

Tsubaki Power Column



Tsubaki Power Column is a vertical rack system designed to store articles automatically at high speed while making effective use of ceiling space. This versatile system can be used to store goods in distribution centers, or mechanical components and running stock in various types of plants. The size of this system can be altered to suit the goods it handles or its installation location, enabling high storage performance.

Features

- Goods are immobile and stable when in storage, and are not affected by unbalanced loading.
- Large, wide picking window provides a good workspace.
- Individual trays to suit the goods.
- Level pitch can be adjusted depending on the height of the goods to prevent wastage of space.

Tsubaki AUTRAN VANGUARD

Tsubaki Autran Vanguard is a monorail type automatic conveyor system that makes effective use of ceiling spaces. This fast-running system features a variety of layouts depending on the product, including a hanging design, which results in a compact layout for the whole system.



Features

- Can accommodate a variety of layouts.
- Fast running speed, requiring fewer vehicles in the system.
- Suitable for clean environments, such as IT and food plants.

Tsubaki AGV MARK II



Tsubaki Roll paper feeding AGV is an automatic roll paper feeding system designed for use mainly in newspaper printing factories. This advanced system can be installed in a new factory or added as an upgrade to existing plants.



Features

In the new factory

- Minimized space in a paper feeding area is achieved by the compact design of the cart body.
- Adoption of magnetic tape guidance facilitates route change at future expansion / remodeling.

By the renewal of the existing factory

- By lowering the truck's lower floor, it is possible to roll from the existing inclined paper cabinet and transfer the paper roll.
- It is possible to run on an existing floor such as an iron plate.

Tsubaki ADS

Tsubaki ADS is a ground breaking, unmanned conveyance system for roll paper feeding. This system is ideal for use in both existing newspaper printing factories and newly constructed plants.

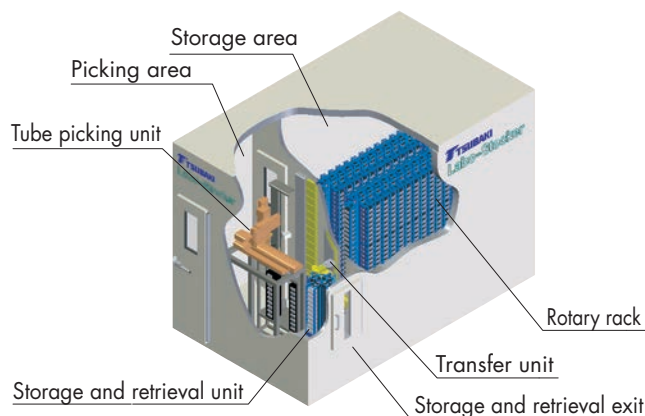


Features

- Trackless, requiring no rails or guides.
- A pit-less system that eliminates the need for foundation work.
- Wireless communication that eliminates the need for sensors or cables.
- The shorter construction schedule enables many existing plants to continue operation during the system transition.

Tsubaki LABO STOCKER™ rack type

LABO STOCKER Stocker rack type is a small automatic freezer used in the drug development field. This machine can retrieve required samples accurately at high speed from among many samples stored in a freezer.



Features

- Small size combined with high density storage.
- Researchers can order the system to store or retrieve samples or retrieve data from their own computers.
- Sample data management including the remaining amount, and the number to be used.
- Standard modules can be combined to enable storage and retrieval of samples in a layout designed to suit individual needs.
- Secure storage with a bar code/2D code reader.

For Safe Operation



WARNING

To prevent risks, follow the precautions noted below.

1. When using the products contained in this catalog, abide by the applicable safety-related laws and regulations (Rules on occupational safety and health, etc.).
2. To install or remove the product or to perform check and maintenance on it, follow the relevant instruction manual.



CAUTION

To prevent accidents, be sure to observe the precautions noted below.

1. Before using this product, read the catalog and instruction manual carefully for proper use.
2. Do not attempt to reassemble any parts of the product or to additionally process the product for modification.
3. Replacement of parts and repairs should be conducted by skilled technical personnel using genuine parts from Tsubakimoto Chain Co.



TSUBAKIMOTO CHAIN CO.

Tokyo Office

Taiyo Seimei Shinagawa Building.17F
2-16-2,Konan,Minato-ku,
Tokyo,108-0075 Japan
Phone:+81(3)6703-8402 Facsimile:+81(3)6703-8412

North Osaka Sales Office

Daido Seimei Esaka Building, 1-23-101, Esaka-cho,Suita,
Osaka 564-0063 Japan
Phone:+81(6) 7638-1321 Facsimile:+81(6) 6387-0821

Toyota Sales Office

20-8 Shinyashiki, Wakabayashi Higashimachi,
Toyota, Aichi 473-0914 Japan
Phone:+81(565) 51-2622 Facsimile:+81(565) 51-6400



Saitama Plant

20, Shinko, Han-no,
Saitama, 357-8510 Japan

Osaka Office

Nakanoshima Mitsui Building, 3-3-3 Nakanoshima, Kita-Ku,
Osaka, 530-0005 Japan

Plant

Kyotanabe, Saitama, Nagaokakyo,Hyogo,Okayama

TSUBAKI Web Site

<http://www.tsubakimoto.com>

■ Note

- 1.The specifications, dimensions and other particulars specified in this catalog are subject to change for improvement. Before designing your system, please consult with Tsubakimoto Chain Co.
- 2.©The contents of this catalog are copyrighted by Tsubakimoto Chain Co. with all rights reserved. No part of it may be copied without the expressed written consent of Tsubakimoto Chain Co.
- 3.The logos brand or product names in this catalog are trademarks or registered trademarks of Tsubakimoto Chain Co. in Japan and other countries.

Distributor: